

BLUE MOUNTAIN WILDLIFE  
P.O. BOX 389  
Hamburg, PA 19526

# BLUE MOUNTAIN WILDLIFE

I N C O R P O R A T E D

Summer 2020

www.bluemountainwildlife.com

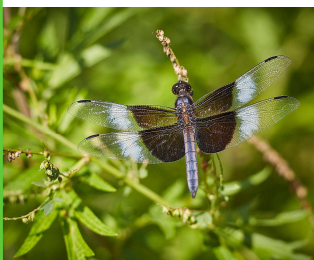
**INSIDE THIS ISSUE:**

**I-78 PROJECT CONTINUES**

**MONUMENT PARKING LOT IMPROVEMENTS**

**OUR MISSION**

**THE PRESERVATION AND CONSERVATION OF THE WILDLIFE AND WETLANDS ALONG THE SCENIC SCHUYLKILL RIVER IN NORTHERN BERKS AND SOUTHERN SCHUYLKILL COUNTY**



**CONTACT US**

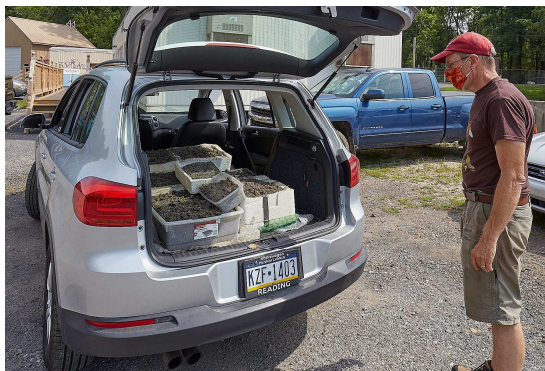
Don Waldron (President): 610.562.3199  
Neven Dries (Vice-President)  
610.858.1904  
Gregg Adams (Secretary/Membership)  
610.562.1428  
Fred Herman (Treasurer): 610.207.5229  
P.O. Box 389 Hamburg, PA 19526  
www.BlueMountainWildlife.com  
info@BlueMountainWildlife.com

## THE COVID SUMMER

As 2020 slips into its final month, BMW looks back on a summer unique in its history. For the first time ever, Blue Mountain Wildlife hosted no events at the Kerny. That's not to say that the Kerny was empty. Quite the contrary. As COVID-19 continued to ebb and flow across the nation, people seemed more willing to get out into the wilder areas than ever before. The Monument Parking Lot seemed to be full of cars on any given hour of

any given day. The Kerny seemed to be a place that people could get away from it all and simply enjoy life's simple pleasures.

This continues to be the case, as the days grow shorter and colder. Fall has come and the first snow flurries have fallen. The Kerny remains a place of simple pleasures in a complicated and difficult world. Take some time and walk her trails as winter approaches. You won't regret it.



**THE ABRUPT DIGGER BEES MOVE TO A NEW HOME**

KERRY GRIM

Kerry Grim has been following the saga of the Abrupt Digger Bee colony under the I-78 Bridge near the Therman Madeira Switchback. On July 31st, he reported:

The Abrupt Digger Bees have successfully built their new nests in the boxes placed under the I-78 Bridge. The bees needed to be removed because of the I-78 construction project. Mike Slater reports the larvae are well developed.

Their location under the bridge was excellent as it was in the rain shadow provided by the bridge along with partial sunshine.

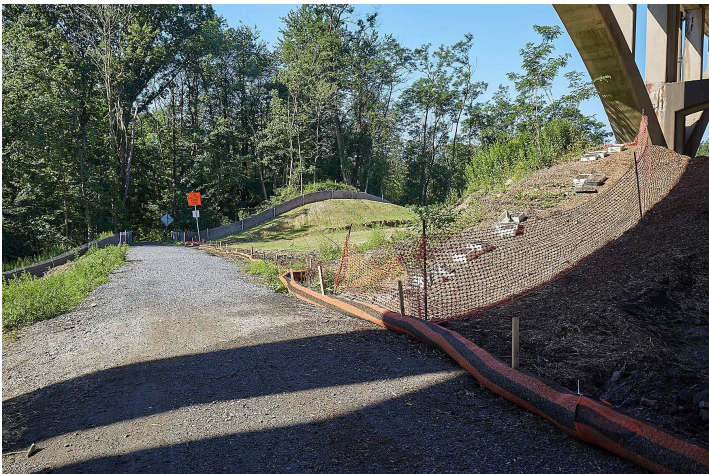
The bees will be transported to a new temporary home with the goal of returning them after the bridge work is complete. This is a long-term project and Mike has done an excellent job in his research on the project that also requires a lot of patience.

## THE I-78 PROJECT CONTINUES THROUGH THE SUMMER

GREGG ADAMS

PennDOT's I-78 Improvement Project continues around the I-78 bridge over the Basin and Schuylkill River. Over the summer, the footers for the new bridge foundations were dug and framed out. The land around the existing bridge was cleared and prepared for the construction of

the new bridges on the north and south sides. The south side bridge is scheduled to be constructed in 2021 and the north side will follow in 2022. The Therman Madeira Switchback will continue to remain open during the construction, but additional protections will be added.





**THE MONUMENT PARKING LOT TO GET A FACELIFT**

GREGG ADAMS

Blue Mountain Wildlife is collaborating with Berks Nature to bring a more natural look to the Monument Parking Lot. In October and November, Sarah Chudnovsky and Larry Lloyd of Berks Nature met with Officers and Directors of Blue Mountain Wildlife to look over the area to the north and west of the parking lot to work out a plan to remove invasive species, reintroduce na-

tive species and create a more natural meadow area that will require less work to maintain. The slopes along the DS Trail will be opened up for more scenic vistas and more native tree species will be planted around the benches and picnic table. The project is anticipated to take many years to complete but will result in better wildlife habitat and less work for BMW volunteers.



BLUE MOUNTAIN WILDLIFE P.O. BOX 389 HAMBURG, PA 19526

Your Courtesy Membership Expires On 12/31/2020

## Blue Mountain Wildlife

**P.O. Box 389  
Hamburg, PA 19526**

**TOM SCHAEFFER'S  
RV SUPER STORE**

Tel 610.562.3071  
Toll Free 800.776.1888  
Fax 610.562.3860  
1236 Pottsville Pike  
Shoemakersville, PA 19555  
www.tomschaeffers.com  
email info@tomschaeffers.com

Restaurant  
**Pizza**  
Como  
Lounge

5th & State St. Hamburg, Pa 19526  
610-562-5009  
COLD SIX PACK BEER TO GO  
HOURS: SUN-THURS. 11AM-10PM  
FRI-SAT. 11AM-11PM

*"The Road of Anthracite"*

SERVING OUR CUSTOMERS AND THE ENVIRONMENT

**READING & NORTHERN RAILROAD**  
2002 and 2011 Regional Railroad of the Year  
1 Railroad Blvd., P.O. Box 218, Port Clinton, PA 19549  
Phone: 610-562-2100 Fax: 610-562-1920 www.READINGNORTHERN.com

**Joseph A. Martin  
C.P.A.**

**THANK YOU TO OUR  
CORPORATE  
SPONSORS**

**WATKINS ARCHITECT**  
LIMITED

COST EFFECTIVE, INNOVATIVE, TIMELESS, SUSTAINABLE ARCHITECTURE

29 West Main Street • P.O. Box 412 • Fleetwood, PA 19522  
Phone (610) 944-5536 • Email you@watkinsarchitect.com • Website www.WatkinsArchitect.com

**Nester's**  
**SANITATION, INC**

- ROLLOFFS
- RESIDENTIAL
- COMMERCIAL

**HAMBURG 610-562-7673**

**State Farm**<sup>TM</sup>

**Kay Greenawalt**  
Kay L Greenawalt Ins Agcy Inc  
124 S 3rd St  
Hamburg, PA 19526-1806

**Lou ees**  
**PIZZA**

...And More!