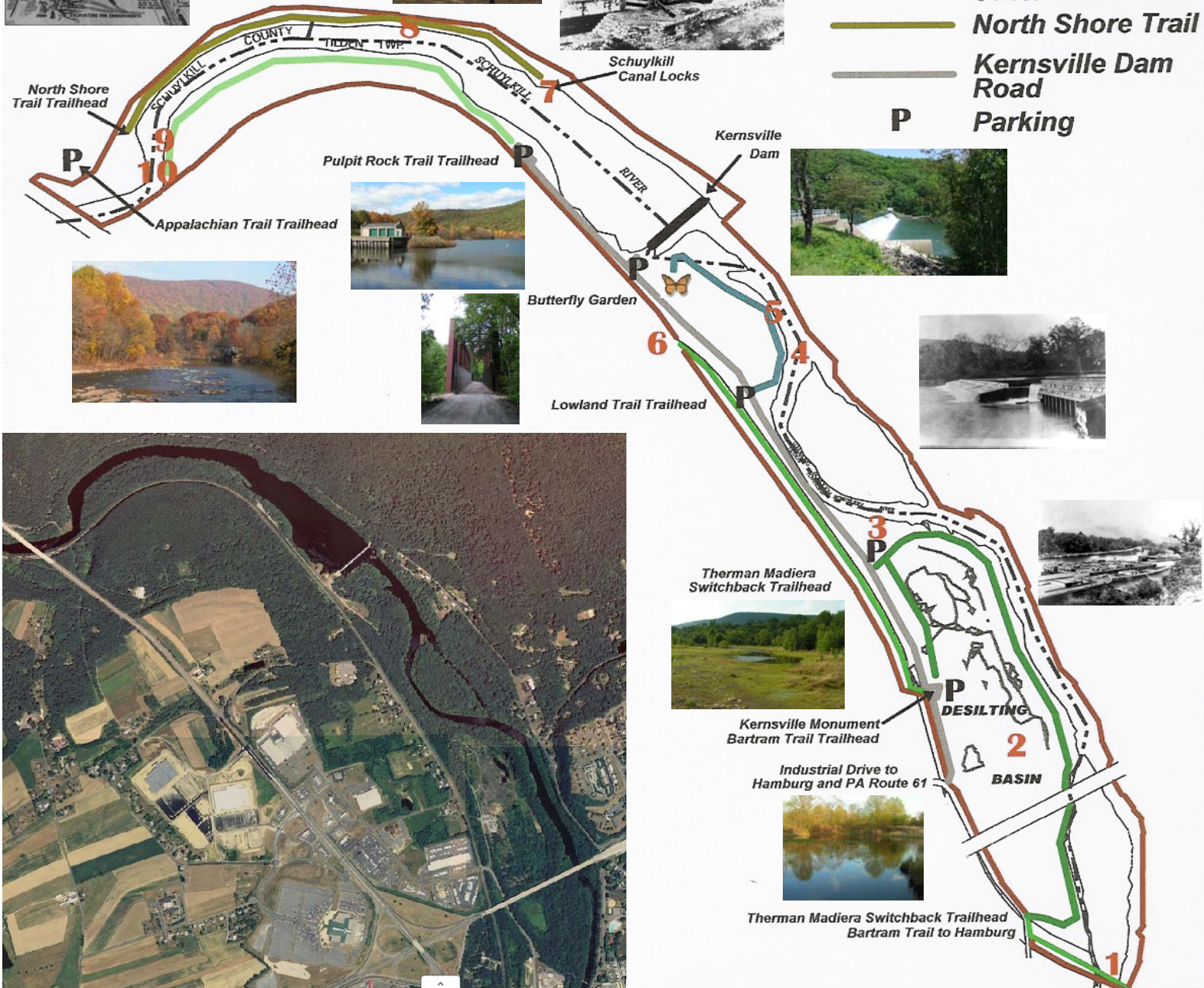


KERNSVILLE DAM AREA



- Area Boundry
- Bartram Trail
- Pulpit Rock Trail
- Lowland Trail
- Therman Madiera Switchback Trail
- North Shore Trail
- Kernsville Dam Road Parking

Area Historical Highlights

1. Pennsylvania Railroad Bridge over the Schuylkill River
2. Desilting Basin, built in 1950 to remove coal silt from the river
3. Remnants of dredging equipment
4. Remains of Little Blue Mountain Dam
5. Remains of coal transfer point from railcar to canal barge
6. Pennsylvania Railroad trestle bridge
7. Big Blue Mountain Dam Locks
8. Allentown Railroad roadbed (never completed)
9. Covered Railroad bridge piers
10. The "Pulpit Rock", an excellent vantage point from which to view the results of the "Moving of the River", the engineering feat of the 1920's

The Kernsville Dam Area is cared for by



A 501(c)(3) Non-Profit Organization

THE MISSION OF BLUE MOUNTAIN WILDLIFE, INCORPORATED IS THE PRESERVATION AND CONSERVATION OF THE WILDLIFE AND WETLANDS ALONG THE SCENIC SCHUYLKILL RIVER

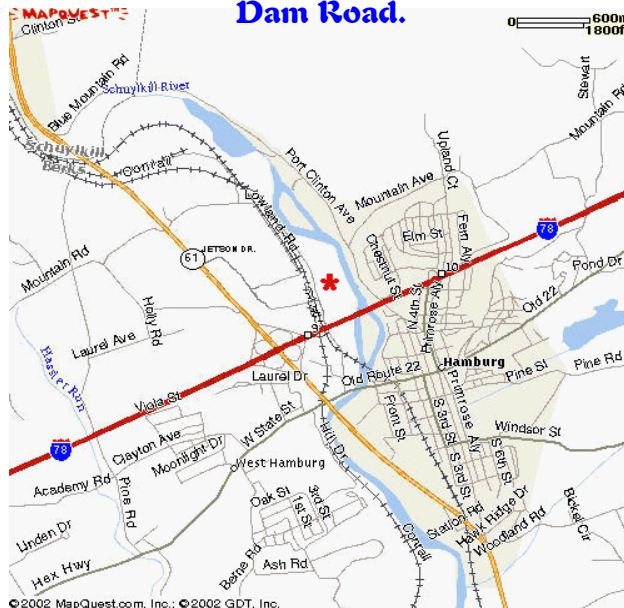


For more information visit us at:
www.bluemountainwildlife.com



Getting There

Get to the Hamburg Area via PA Route 61 or I-78. At the I-78/PA 61 Interchange, take PA 61 North and turn right onto Jetson Drive. Turn right onto Industrial Drive and continue to the railroad tracks. Immediately after the tracks, turn left onto Kernsville Dam Road.



Welcome to the Kernsville Dam Area Tilden Township, PA



Historical Treasure of Northern Berks

Over three hundred years of history focusing on the combination of mountain and river, coal and water. For more than three centuries, the Schuylkill River Water Gap has been an important transportation route. Lenapi trails, settler river transportation, the Schuylkill Canal, railroads and highways converged just minutes away from Cabela's and the I-78/PA 61 interchange. Explore centuries of history in an afternoon here.