

BLUE MOUNTAIN WILDLIFE INCORPORATED

2011 ANNUAL REPORT





THE MISSION OF BLUE MOUNTAIN WILDLIFE INCORPORATED IS
THE PRESERVATION AND CONSERVATION OF THE WILDLIFE AND
WETLANDS ALONG THE SCENIC SCHUYLKILL RIVER

CONTENTS

The Kernsville Dam Recreation Area

Location and Description.....	4
Images.....	7
Blue Mountain Wildlife Incorporated Long-Term Plans and Goals	15
Blue Mountain Wildlife Incorporated History	16
2011 Report	
Officers and Directors	19
Financial Report.....	20
Membership	20
2011 Project Images.....	21

KERNSVILLE DAM RECREATION AREA

The Kernsville Dam Recreation Area encompasses approximately 252 acres and approximately 2 miles of the Schuylkill River which has been designated as a “Scenic River” by the Commonwealth of Pennsylvania.

The Kernsville Dam Recreation Area includes:

- 183 acres in Tilden Township (72.6% of the Area)
- 44 acres in the Borough of Hamburg (17.5% of the Area)
- 18 acres in Windsor Township (7.1% of the Area)
- 7 acres in West Brunswick Township (2.8% of the Area)



Image courtesy of MapQuest.com

KERNSVILLE DAM RECREATION AREA

The Kernsville Dam Recreation Area can be divided into several distinctly different areas:
The Desilting Basin



KERNSVILLE DAM RECREATION AREA

The Area Below the Dam



Image courtesy of MapQuest.com

The Area Above the Dam & The Northeast Shore of the Schuylkill River

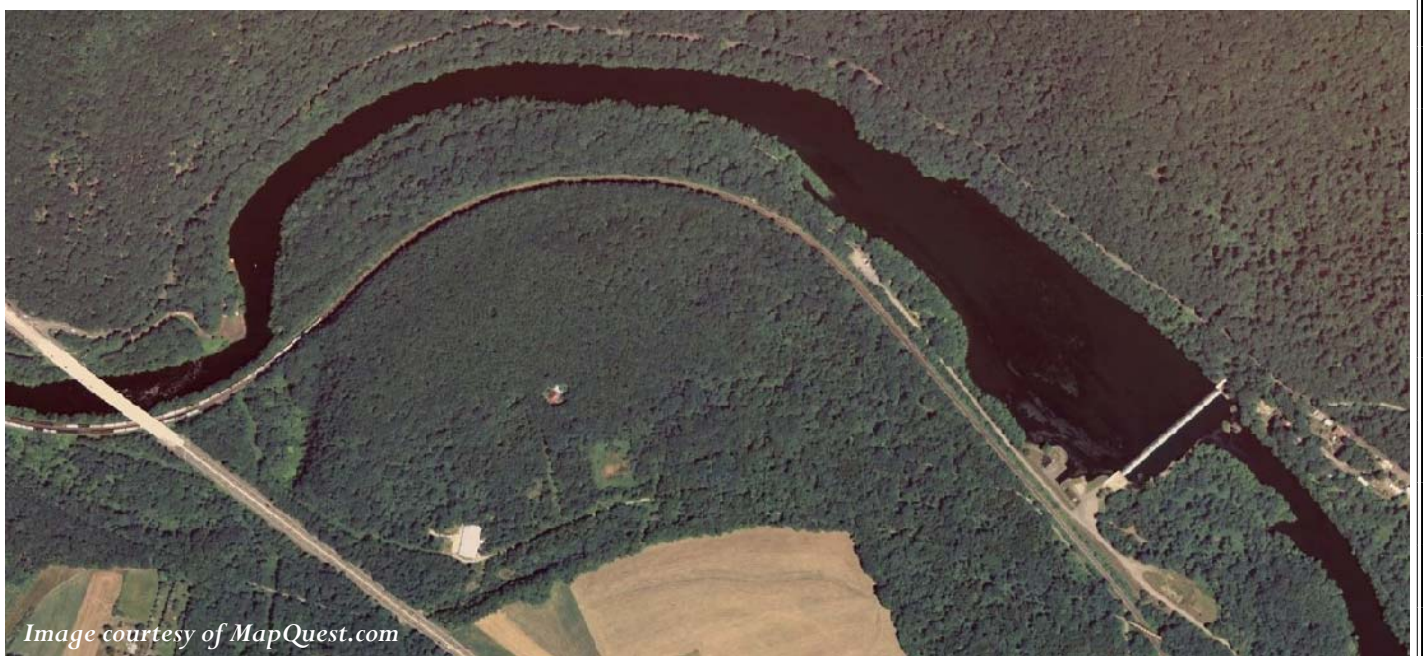


Image courtesy of MapQuest.com

KERNSVILLE DAM RECREATION AREA



Desilting Basin - Area of approximately 85-90 acres

Limited opportunities for improvements due to future use for desilting purposes
I-78 bridge bisects the basin east to west, dividing the undulating wetlands/scrub forest
in the northern half of the basin from the flat grassland in the southern half



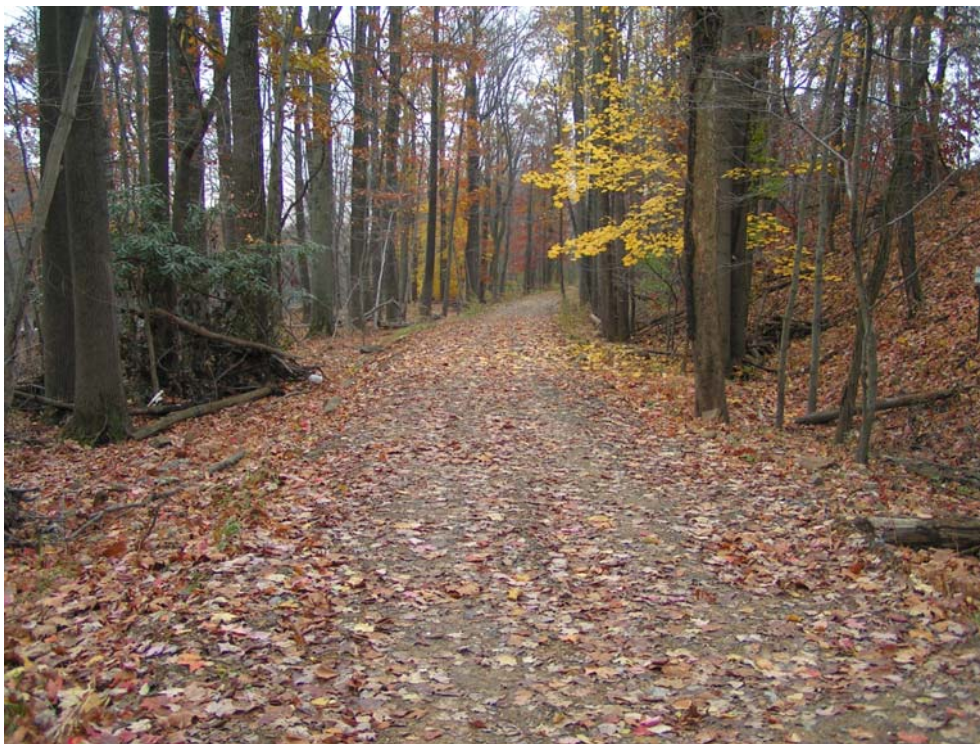
KERNSVILLE RECREATION DAM AREA



Desilting Basin

Cabela's Wetland Mitigation Project located in the northwest corner of the desilting basin

The Therman Madeira Switchback Trail is located on the outside perimeter of the desilting basin wall along its north, east and south sides



KERNSVILLE DAM RECREATION AREA



Area Below the Dam

Area consists predominantly of lowlands and wetlands covered by mature hardwood forests

Two major islands are present in the Schuylkill River

A canoe portage and access point are located in the area below the dam on the western shore



KERNSVILLE DAM RECREATION AREA



Area Above the Dam

The lower half of the area above the dam is accessed from Industrial Drive by Kernsville Dam Road

The area near the dam provides an existing parking lot and fishing opportunities

At the terminus of Kernsville Dam Road is an existing parking lot, picnic area and popular fishing spot

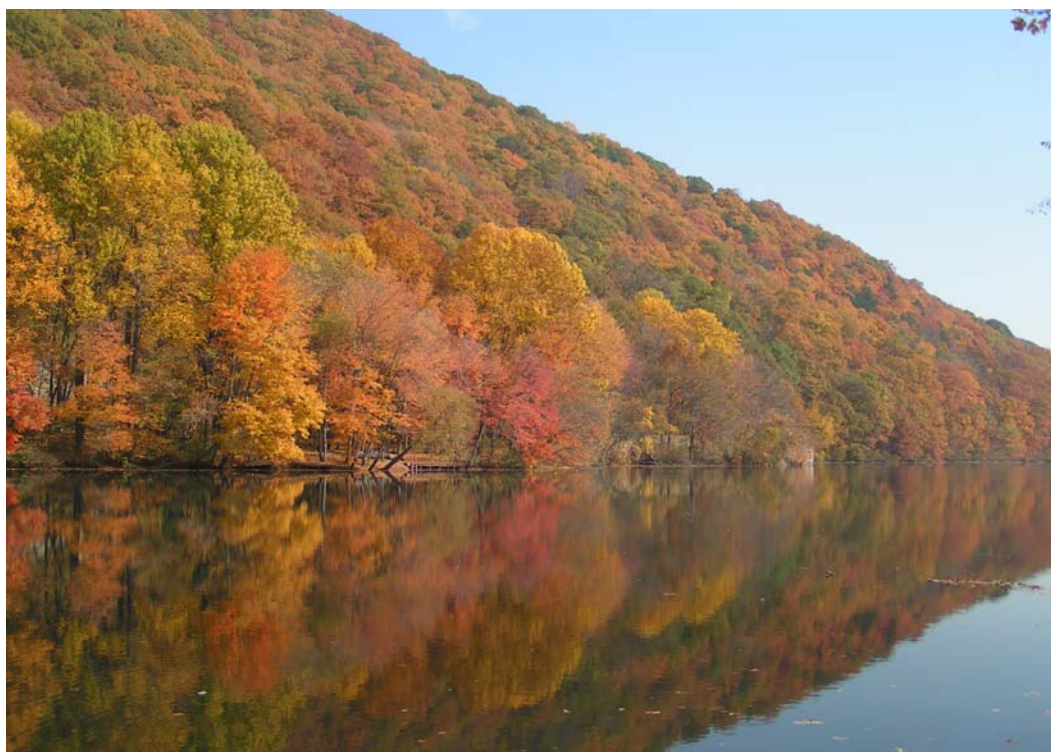


KERNSVILLE RECREATION DAM AREA



Northeast Shore of the Schuylkill River

The northeast shore is a popular public access point to the Schuylkill River
The Appalachian Trail crosses a portion of the area between Port Clinton Avenue and PA Route 61
The northeast shore boasts a river beachfront



KERNSVILLE RECREATION DAM AREA



The Bartram Trail linking Hamburg and Port Clinton

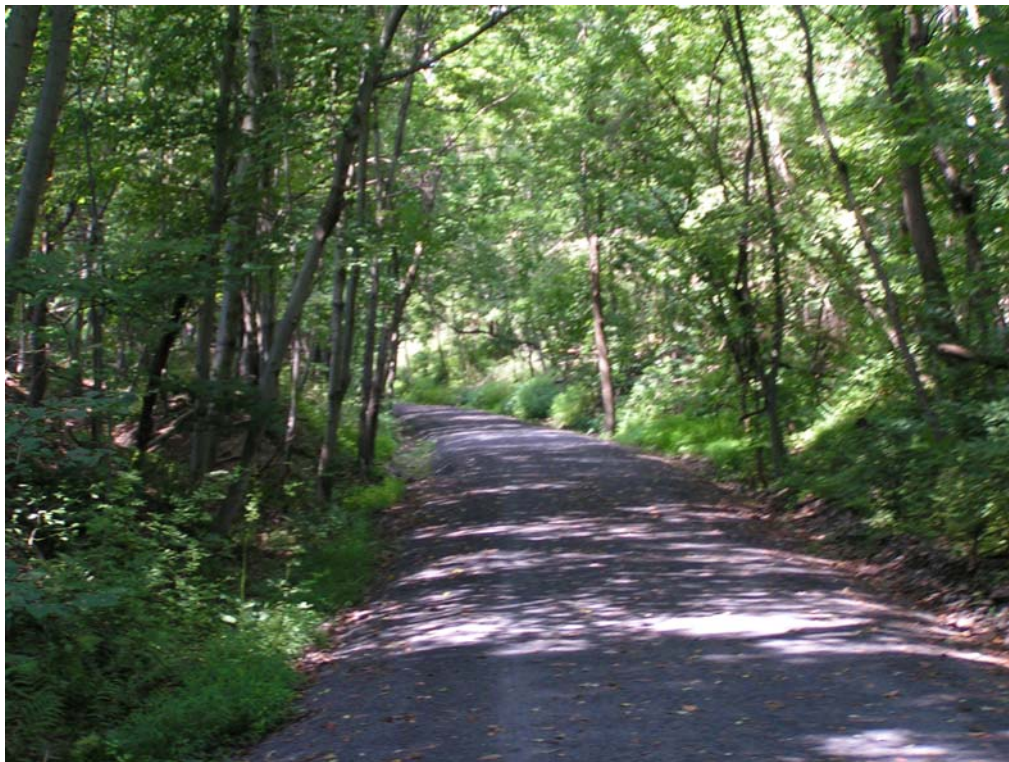
The trailhead at Hamburg is in excellent condition and allows convenient access. The Bartram Trail follows an elevated section of the Pennsylvania Railroad right-of-way through much of the Kernsville Dam area allowing many scenic views of the surrounding countryside.



KERNSVILLE RECREATION DAM AREA




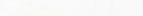


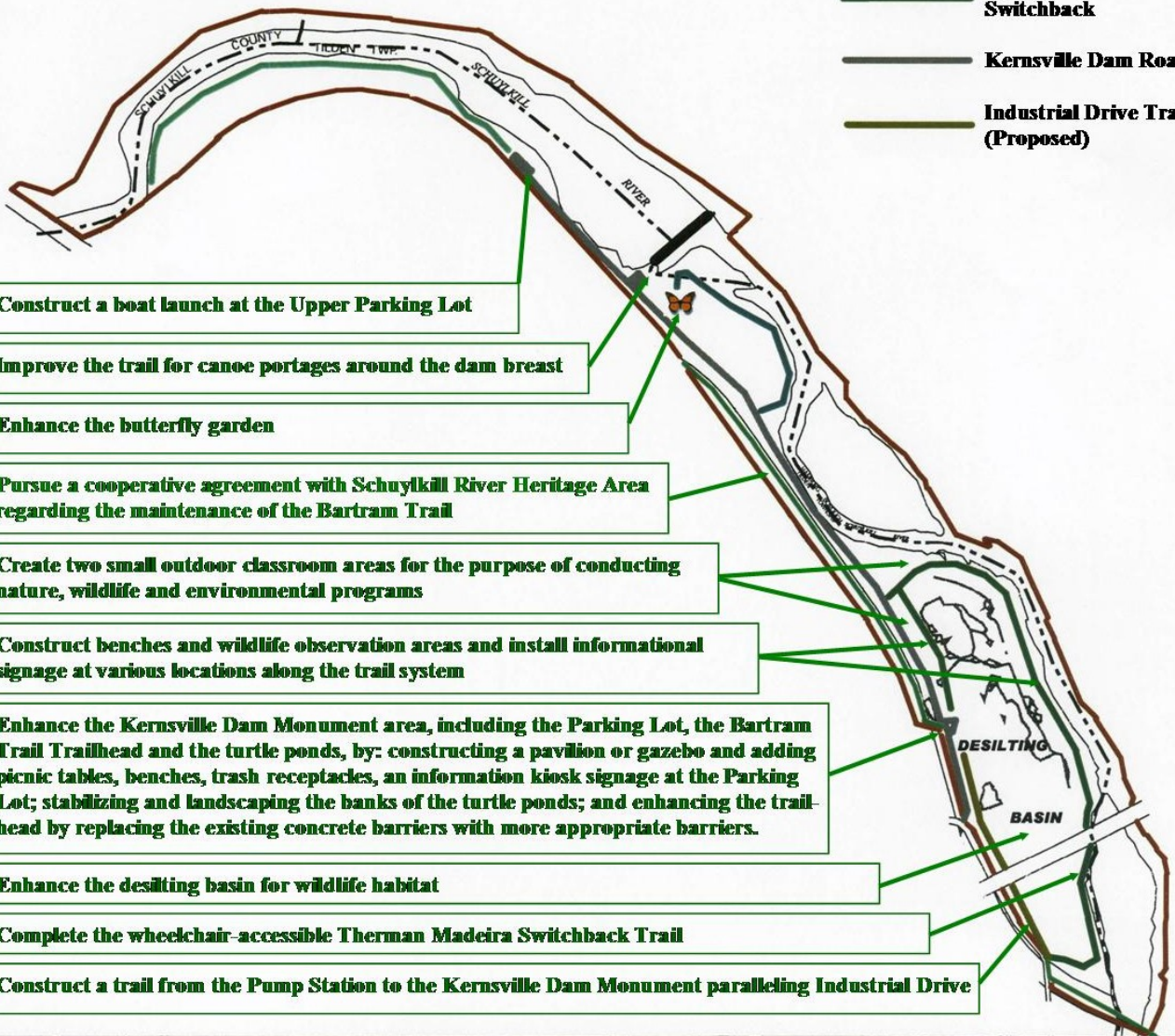
Pennsylvania Railroad iron trestle bridge crossing over the Reading, Blue Mountain and Northern Railroad in the area just below the dam
The northernmost sections of the proposed Bartram Trail traverse mixed hardwood and conifer forest and feature steeply sloped cuts on both sides







BLUE MOUNTAIN WILDLIFE INCORPORATED LONG-TERM PLANS AND GOALS

2009 Kernsville Dam Recreation Area Open Space Plan

-  KDRA Boundary
-  Bartram Trail
-  Pulpit Rock Trail
-  Lowland Trail
-  Therman Madeira Switchback
-  Kernsville Dam Road
-  Industrial Drive Trail (Proposed)



- Construct a boat launch at the Upper Parking Lot
- Improve the trail for canoe portages around the dam breast
- Enhance the butterfly garden
- Pursue a cooperative agreement with Schuylkill River Heritage Area regarding the maintenance of the Bartram Trail
- Create two small outdoor classroom areas for the purpose of conducting nature, wildlife and environmental programs
- Construct benches and wildlife observation areas and install informational signage at various locations along the trail system
- Enhance the Kernsville Dam Monument area, including the Parking Lot, the Bartram Trail Trailhead and the turtle ponds, by: constructing a pavilion or gazebo and adding picnic tables, benches, trash receptacles, an information kiosk signage at the Parking Lot; stabilizing and landscaping the banks of the turtle ponds; and enhancing the trail-head by replacing the existing concrete barriers with more appropriate barriers.
- Enhance the desilting basin for wildlife habitat
- Complete the wheelchair-accessible Therman Madeira Switchback Trail
- Construct a trail from the Pump Station to the Kernsville Dam Monument paralleling Industrial Drive

-  Pursue a long-term cooperative agreement with Tilden Township, Berks County and the Schuylkill River Heritage Area for the preservation of the natural and historic Kernsville Dam Recreation Area.
-  Involve youth groups such as Scouts and school Wilderness Clubs in habitat improvement projects and environmental education.
-  Involve and coordinate the various public and private agencies and organizations, particularly at the local level, that could provide assistance with the above-stated goals.
-  Promote compatible forms of passive recreation.

Note: All proposed improvements are subject to approval by Bureau of Abandoned Mine Reclamation. Any improvements proposed on land beyond that of the lease agreement will require permission and approval of the controlling interests.

BLUE MOUNTAIN WILDLIFE INCORPORATED HISTORY

🌳 The roots of Blue Mountain Wildlife, Incorporated, go back to the early 1980's. Mr. Ron Cassler founded Hamburg Ecology Life Patrol (H.E.L.P.), which cleaned up the Kernsville Dam area, rebuilt the restrooms, and maintained trash removal and grass mowing on a weekly basis. H.E.L.P. relied upon limited funding and volunteer labor provided by its members. H.E.L.P. was active throughout the 1980's and early 1990's and several members are active participants in Blue Mountain Wildlife today.

🌳 In November, 2000, the first series of public meetings presenting plans for intensive development of recreational facilities in the Kernsville Dam area brought together a group of concerned citizens to form the "Friends of the Kernsville Dam". Throughout the series of public meetings the "Friends of the Kernsville Dam" offered several pre-existing alternative sites for recreational facilities as possible ecological solutions. None of these were incorporated into the proposed plans. The "Friends of the Kernsville Dam" circulated a petition in opposition to the proposed plans. Approximately 1,300 signatures were collected. The "Friends of the Kernsville Dam" approached nearby municipalities with the petition to solicit support in opposition of the proposed plan.

🌳 On June 29, 2001, the "Friends of the Kernsville Dam" officially incorporated as "Blue Mountain Wildlife, Incorporated" to help solidify existing support to preserve the wild area around the Kernsville Dam and develop alternative locations for recreational facilities throughout northern Berks County. Blue Mountain Wildlife consulted with and received support from nearby property owners and businesses to develop an alternative plan. The Reading, Blue Mountain, and Northern Railroad Company became a corporate sponsor. On October 10, 2001, Blue Mountain Wildlife presented its plan for the preservation of the Kernsville Dam area at a press conference to various agencies and organizations. Our plan was well received by the local municipalities and by the Pennsylvania Department of Environmental Protection's Bureau of Abandoned Mine Reclamation, the state agency that administers the Kernsville Dam area.

🌳 In March 2002, Blue Mountain Wildlife Incorporated applied for and was granted probationary 501(c)(3) non-profit organization status. BMW representatives attended the Hamburg Hunting and Fishing Expo, the Schuylkill Watershed Congress, Hamburg Sidewalk Sale and Hamburg Heritage Days. Major events included the Earth Day Clean-Up and participation in the Schuylkill Sojourn. Blue Mountain Wildlife also devoted much time and effort in negotiating with Northern Berks Recreation Council and other organizations to provide acceptable solutions to the issues of preserving the Kernsville Dam area while providing additional active recreation facilities in Northern Berks County.

🌳 Two Thousand Three saw Blue Mountain Wildlife's first major fundraising event—the Spring Rail Ramble sponsored by the Reading, Blue Mountain and Northern Railroad on May 31st. Blue Mountain Wildlife representatives attended the Hamburg Hunting and Fishing Expo on February 21-23, the Bear Creek Festival on May 18, the Northkill Watershed Meeting on July 23 and Hamburg Heritage Day on September 27. Major events included the Earth Day Clean-Up on April 26 and 27, Tilden Elementary School's Field Day activities on May 9 and participation in the Schuylkill Sojourn on June 1. On September 30, 2003, Blue Mountain Wildlife was granted a lease for the area from Pennsylvania Department of Environmental Protection's Bureau of Abandoned Mine Reclamation. Blue Mountain Wildlife applied for and later received a \$25,000 grant from the Berks County Open Space and Recreation Commission. The grant required 50% matching funds which was to be met through fund-raising, donations and in-kind services. By the end of the year, Blue Mountain Wildlife had contracted with Pet Net Designs to provide webhosting for a website (www.bluemountainwildlife.com).

BLUE MOUNTAIN WILDLIFE INCORPORATED HISTORY

Two Thousand Four saw the completion of Blue Mountain Wildlife's biggest project to date—the construction of the one-mile Therman Madeira Switchback Trail. The project was completed with the funding from the Berks County Open Space and Recreation Grant secured in the previous year and matching funds from donations of money, materials and time from the organization's many supporters. The second major project of the year, the construction of the Butterfly Garden, began in the spring. The Pennsylvania Fish and Boat Commission took up Blue Mountain Wildlife's request to establish a "No Wake" zone on the Kernsville Dam. Blue Mountain Wildlife took the bold step of declaring the desilting basin a "Wildlife Propagation Area", prohibiting hunting and other disruptive activities so that wildlife may flourish there and spread elsewhere along the Schuylkill. Blue Mountain Wildlife representatives attended the Hamburg Hunting and Fishing Expo. Major events included the Earth Day Clean-Up on May 1 and 2, participation in the Schuylkill Sojourn in June, the Helping Wheels Unincorporated tour of the Therman Madeira Switchback on July 11 and participation in Hamburg Heritage Day on September 25.

Two Thousand Five saw the establishment of a number of Blue Mountain Wildlife "annual traditions". The first was the Annual Membership Meeting and Banquet, held on January 13. The second was an expansion of the Earth Day activities beyond the Clean-Up. April 23rd and 24th's activities also included the improvement of approximately three-quarters of a mile of trail above and approximately one-half mile of trail below the Kernsville Dam, a bird walk and a raptor presentation. The third was the first of many fund-raising races. On May 28 a 5K Fun Run/Walk was held at the Monument and on September 24 a 5K/10K Run was held in conjunction with Hamburg Heritage Day. Other major events included selling Kerny Monster Burgers in the Taste of Hamburg-er Festival and selling ice cream and hosting historical tours of the Kernsville Dam area during Hamburg Heritage Day.

Two Thousand Six saw three major projects come to fruition. The Cabela's Wetland Mitigation project gained approval and was implemented in September. Approximately one-half acre of new wetlands and one-third mile of new trail were constructed in the desilting basin north of the Monument. On May 24, Environmental Education Day brought 120 5th graders from Hamburg Elementary School to the Kernsville Dam area for a number of outdoor educational opportunities. The Northern Berks QUAD Games were inaugurated as the organization's primary fundraiser and brought in approximately 300 participants to the four races. Other events included the Second Annual Membership Banquet on January 12 and the Earth Day/Outdoor Appreciation Weekend on May 20 and 21. On March 22, 2006, Blue Mountain Wildlife completed its 501(c)(3) probationary period and its non-profit status was confirmed and made permanent.

Two Thousand Seven saw the continuation of our successful projects. On May 11, Environmental Education Day again brought 120 5th graders from Hamburg Elementary School to the Kernsville Dam area for a number of outdoor educational opportunities. The Northern Berks QUAD Games experienced its second year as the organization's primary fundraiser and brought in approximately 300 participants to the four races. BMW also set about updating its 2001 Open Space Plan and made presentations at the four surrounding municipalities inviting them to participate. Other events included the Third Annual Membership Banquet on January 11, the Kutztown Earth Day Celebration on April 19, the Earth Day Clean-Up on April 21, the Bear Creek Festival on May 18 and the Pulpit Rock Beach Clean-Up on November 8. Scout projects included the KDRA sign by Austin Hartman and the Kernsville Monument beautification by Junior Girl Scout Troop 114.

Two Thousand Eight saw another set of projects begin. BMW secured two grants to top the Wetlands Trail and parts of the Therman Madeira Switchback as well as to construct a footbridge at the Industrial Drive pump station.

BLUE MOUNTAIN WILDLIFE INCORPORATED HISTORY

Work on the Cabela's Wetlands continued. Construction was begun on an information kiosk at the Monument parking lot. An updated draft Open Space Plan was created and comments from all stakeholders solicited and collected. The BMW website was updated by KDS FX Design and BMW took over the domain name and the upkeep of the website. In its third year, the Northern Berks QUAD Games brought two races back to the KDRA and brought in approximately 280 participants to the four races. Other events included the Fourth Annual Membership Banquet on April 25, the Earth Day Clean-Up on April 26, the Bear Creek Festival on May 18 and Environmental Education Day on May 30.

Two Thousand Nine saw the completion of the previous year's projects. The parking lot improvements included the completion of the informational kiosk and the installation of trash barrels. Additional sections of the Therman Madeira Switchback were topped, and the Donald Waldron Footbridge was completed and a dedication ceremony held on October 24th. Eagle Scout candidate Kurt Kissinger constructed an outdoor classroom at the north end of the Cabela's Wetlands. Despite three wet races, the fourth annual Northern Berks QUAD Games brought in 236 participants while earning over \$2,000. Inclement weather also caused the cancellation of the Annual Membership Banquet and forced the relocation of the expanded Environmental Education Day (now including Perry Elementary) to Tilden Elementary School on May 29. Other events included Earth Day Cleanups scheduled on each Saturday in April, the Bear Creek Festival on May 17th and Hamburg Community Days on July 3rd and 4th.

Two Thousand Ten saw the convergence of a number of favorable events. Thanks to donations from several supporters and the Pennsy Paving Company, two of the worst portions of Kernsville Dam Road were milled and repaved, and the Bartram Trail Trailhead was milled, reconfigured and landscaped. Schuylkill River Heritage Area completed the topping of the Therman Madeira Switchback. Other projects, events and noteworthy items included: the coordination with the Tilden Township Environmental Advisory Council on two Township-wide Clean-Ups—in April and November; the 2010 Northern Berks QUAD Games, which brought in 245 participants and earned approximately \$3,800.00; the construction of the Environmental and Historical GPS Trail by Eagle Scout Candidate Casey Schneck; the 2010 Annual Membership Meeting and Banquet; Environmental Education Day; participation in the Schuylkill Watershed Congress, Bear Creek Festival, Hamburg Community Day and the June Hamburg Art Stroll; and community service volunteered by Penn State senior Alex Sung, Hamburg High School students Corey Fuhman and Nick Meyers, and "Community Explosion" volunteers of Blue Mountain Academy and the Bridge Church.

Two Thousand Eleven saw some ups and downs. Blue Mountain Wildlife was challenged by a number of thefts, acts of vandalism, and repeated flooding throughout the year. But the good outweighed the bad. In the early spring, Tilden Township donated a day's worth of labor and equipment to the maintenance of Kernsville Dam Road, markedly improving the road near the Upper Parking Lot. On May 12th, BMW and Schuylkill River Heritage Area hosted a ribbon-cutting ceremony, officially opening the two miles of Schuylkill River Trail between Hamburg and the Bartram Trail. On July 16th, BMW celebrated its tenth anniversary with a party at the Monument Parking Lot, which drew over two hundred people. The Northern Berks QUAD Games were put on hold for retooling but, due to popular demand, the Dutch Country Bicycle Races were held on July 30th. Other projects and events included: the Annual Membership Banquet on January 28th; a cold and wet Earth Day Clean-Up on April 23rd; a warm and sunny Environmental Education Day on June 3rd; flood-damage repairs to the Therman Madeira Switchback in May and September; the completion of the second outdoor classroom by Eagle Scout candidate Danny Capitelli in May; more road repairs by the Bridge Church "Community Explosion" volunteers and the Tilden Township road crew in July; a tree planting in the Cabela's Wetland in November; and volunteer service by Alex Hartman. BMW also participated in Hamburg ThawFest, Central Berks Community Day Fair, Bear Creek Festival, and the Taste of Hamburg-er Festival.

2011 OFFICERS AND DIRECTORS


Blue Mountain Wildlife Incorporated Officers

 Don Waldron President 2011

Don has been a resident of Tilden Township since 1989 and has been a life-long outdoor enthusiast. He has served as President of Tilden Action Group, a citizens group that was involved with past land-use issues in Tilden Township. He is currently active in various outdoor clubs. He is also currently a Tilden Township alternative delegate to the Northern Berks Recreation Commission.

 Barry Shollenberger Vice-President 2011

Barry, a life-long resident of Tilden Township, grew up within walking distance of the Kernsville Dam. He has spent 30 years as a wild lands fire fighter including 14 trips on western fire details. Dedicated to preserving and protecting wild lands, he is a member of the National Turkey Federation, Ducks Unlimited and the United Bowhunters. He is active in four different Fish and Game Associations and the PA Forest Fighter Warden's Association. He is currently the Tilden Township delegate to the Northern Berks Recreation Commission.

 Gregg R. Adams Secretary 2011

Gregg spent 20 years growing up on his parents' property off Lowland Road in Tilden Township and has been a resident of Hamburg since 2008. He is a life-long outdoor enthusiast. He currently is an Assistant Planner with South Whitehall Township, Lehigh County.

 Sue A. Fisher Treasurer 2011

Sue Fisher is a lifetime Hamburg Area and a Tilden Township resident since 1994. She spent many years as a teenager and an adult enjoying the Kernsville Dam environment. Sue currently operates two businesses out of her home and is a former Reading Company and Conrail employee.

Blue Mountain Wildlife Incorporated Directors

 Gregg R. Adams Director 2009-2011

Gregg spent 20 years growing up on his parents' property off Lowland Road in Tilden Township and has been a resident of Hamburg since 2008. He is a life-long outdoor enthusiast. He currently is an Assistant Planner with South Whitehall Township, Lehigh County.

 Pat A. Adams Director 2011-2013

Pat is a former teacher with the Hamburg Area School District and a resident of Tilden Township since 1960. She is a life-long outdoor enthusiast and is also on the Hamburg Library Board and the Tilden Environmental Advisory Council.

 Dennis Henne Director 2009-2011

Dennis has been a member of Blue Mountain Wildlife since 2002. He has been a Hamburg resident since 1985 and is an avid outdoorsman and conservationist. His interests include railroad and canal history.

 Mary Jo McCormick Director 2010-2012

Mary Jo is a resident of Fleetwood. She was volunteered into the group by her sister Pat Adams for the Dutch Country Bicycle Race and went on to accept a Directorship.

 Harry S. Nelson Director 2010-2012

Harry is currently a resident of Upper Tulpehocken Township and has been a resident of the area since 1959. He is a member of the Berks County Planning Commission and the Chairman of the Berks County Open Space and Rec-

2011 OFFICERS AND DIRECTORS

recreation Advisory Council.

Barry Shollenberger Director 2010-2012

Barry, a life-long resident of Tilden Township, grew up within walking distance of the Kernsville Dam. He has spent 30 years as a wild lands fire fighter including 14 trips on western fire details. Dedicated to preserving and protecting wild lands, he is a member of the National Turkey Federation, Ducks Unlimited and the United Bowhunters. He is active in four different Fish and Game Associations and the PA Forest Fighter Warden's Association. He is currently the Tilden Township delegate to the Northern Berks Recreation Commission.

Eugene Stohrer Director 2010-2012

Gene is new to the area, spending much of his time with his daughter in Mohrsville. He joined Blue Mountain Wildlife in 2006. He has been hiking the Blue Mountain Range trails for 35 years. As a 20-year member of the Delaware Riverkeeper Network he supported water quality efforts in the Philadelphia area. Recently, he actively supported a stream bank assessment program of Mill Creek for the Schuylkill Riverkeeper Network and Berks County DCNR. He brings to Blue Mountain Wildlife his love of the outdoors, appreciation of wildlife, and an understanding of the importance to preserve open spaces.

2011 Financial Statement

Total Assets January 1, 2011	\$9,879.00
Total Liabilities January 1, 2011	\$0.00
Gifts and Contributions received	\$14,276.17
Membership received	\$1,481.00
Interest	\$15.26
Income from fund raisers/banquet, etc.	\$1,673.00
Total 2011 revenue	\$17,445.43
Special Project Expenses	\$9,429.85
General Expenses (includes, advertising, office expense, donations, insurance, postage/shipping and printing)	\$3,332.76
Total 2011 expenses	\$12,762.61
Total assets December 31, 2011	\$14,561.82
Total liabilities December 31, 2011	\$0.00

All financial records are on file with the Treasurer of Blue Mountain Wildlife Incorporated and are available for review upon request.

2011 Membership Statement

As of January 1, 2011: 107

Including: 5 Corporate, 1 Donation, 60 Family, 11 Lifetime, 14 Senior, 16 Single, 0 Student

As of December 31, 2011: 125

Including: 9 Corporate, 1 Donation, 58 Family, 13 Lifetime, 21 Senior, 23 Single, 0 Student

All membership records are on file with the Secretary of Blue Mountain Wildlife Incorporated and are available for review upon request.

2011 PROJECT IMAGES

2011 Annual Membership Meeting and Banquet January 28th



2011 PROJECT IMAGES

Earth Day Clean-Up April 23rd



2011 PROJECT IMAGES

Schuylkill River Trail Dedication May 12th



2011 PROJECT IMAGES

Community Event Participation



Hamburg ThawFest April 10th



Central Berks Community Day Fair May 14th



Bear Creek Festival May 15th

2011 PROJECT IMAGES

Community Event Participation



Taste of Hamburg-er Festival September 3rd

2011 PROJECT IMAGES

Environmental Education Day June 3rd



2011 PROJECT IMAGES

Blue Mountain Wildlife Tenth Anniversary Celebration July 16th



2011 PROJECT IMAGES

Bridge Church Community Explosion July



2011 PROJECT IMAGES

Danny Capitelli Outdoor Classroom May



Alex Hartman Community Service November



2011 PROJECT IMAGES

Cabela's Wetlands Tree Planting November



2011 PROJECT IMAGES

Dutch Country Bicycle Races July 30th



